



CUTTER & BUCK

AW2013

The Genuine Spirit of the Pacific North West

Cutter & Buck

Established in Seattle in 1989, Cutter & Buck's genuine commitment to the Pacific Northwest lifestyle is evident in our apparel, effortlessly integrating urban and outdoor lifestyles, timeless and modern appeal. Our 2013 collection is divided in three collections, CB Classics, CB Golf and CB Denim.

CB Classics featuring the luxury sportswear you have come to expect from Cutter & Buck, with modern styles, colors and fabrics, and is the perfect platform for your branded experience.

CB Golf is a small draft from our performance driven golf collection which focus on ergonomic details and fabrics for the perfect day on the golf course in any weather.

CB Denim is a collection that is inspired by the environment and the people in the city of Seattle. You find styles and qualities that gives you a cool and worn out look.



Table of Contents

CB Classics	4-21
CB Denim [LIMITED STOCK]	22-31
CB Sports	32-46
CB Accessories	47-49



[ALS]



[AGH]

[ATC]

[BL]

[CDR]

[HT]

[MNC]



[NVBU]

[PY]

[RD]

[SBL]

[SG]

[TBL]

[WH]

CB DryTec™ Elliott Bay

Lightweight polos in fresh colors.

Men's CB DryTec Elliott Bay Polo - 58% cotton, 42% polyester piqué. Moisture wicking. Double-faced collar. Three-button placket with natural colored logo buttons. Back half moon. Forward shoulders. Open sleeves. Side vents. Tonal C&B pennant embroidery at left sleeve hem. Machine wash.

Men's Sizes: S-XXXL

MCK00421

Big & Tall Sizes: 1XB-5XB, LT-4XT

BCK00421



[ALS]

Polo

CB DryTec™ Elliott Bay

Lightweight polos in fresh colors.

Ladies' CB DryTec Elliott Bay Polo - 58% cotton, 42% polyester piqué. Moisture wicking. Self-fabric collar. Two-button placket with natural colored logo buttons. Forward shoulders. Open sleeves. Side vents. Tonal C&B pennant embroidery at back half moon. Machine wash.

Ladies' Sizes: XS-XXXL

LCK02357



[ALS]



[BL]



[CHT]



[NVBU]



[PY]



[SG]



[TBL]



[WH]



CHUTNEY (CHT)

ATLAS (ALS)

PALE YELLOW (PY)

BLACK (BL)

TOUR BLUE (TBL)

WHITE (WH)

NAVY BLUE (NVBU)

SEA GREEN (SG)

CB DryTec™ Medina Tonal Stripe

Modern sportswear for today's lifestyle.

Men's CB DryTec Medina Tonal Stripe Polo - 53% cotton, 47% polyester jersey. Moisture wicking. Self-fabric collar. Three-button placket. Logo buttons. Back half moon. Piping on inside back neck. Forward shoulders. Open sleeves. Side vents. Tonal C&B pennant embroidery at left sleeve hem. Machine wash.

Men's Sizes: S-XXXL

MCK00427

Big & Tall Sizes: 1XB-5XB, LT-4XT

BCK00427



[ALS]



[BL]



[CHT]



[NVBU]



[PY]



[SG]



[TBL]



[WH]



Polos

CB DryTec™ Medina Tonal Stripe

Modern sportswear for today's lifestyle.

Ladies' CB DryTec Medina Tonal Stripe Polo - 53% cotton, 47% polyester jersey. Moisture wicking. Self-fabric collar. Contrast under collar and Y placket. Forward shoulders. Princess seams. Open sleeves. Side vents. Tonal C&B pennant embroidery at back half moon. Machine wash.

Ladies' Sizes: XS-XXXL

LCK02358



[CHL]



[ALS]

[BL]

[CHT]

[NVBU]

[RFL]

[AVAILABLE FROM 25.09.13]

Highland Park Polo

Style for wherever your day takes you.

Men's CB DryTec Highland Park Polo - 94% polyester, 6% spandex tonal striped jersey. Self collar. Self-fabric neck tape at inside back half moon. Three- button placket with diagonal stitching. Side vents. Open sleeves. Dyed to match logo buttons. Tonal C&B pennant embroidery at left sleeve hem. Moisture-wicking. Machine wash.

Men's Sizes: S-XXXL

MCK00755



WHITE (00)

RED (35)

NAVY BLUE (58)

BLACK (99)

TOUR BLUE (52)

TOUR BLUE (52)

WHITE (00)

RED (35)

NAVY BLUE (58)

BLACK (99)

CB DryTec™ Championship Polo

Style and performance combined

Men's Championship Polo - 65% Cotton and 35% polyester with double faced collar. Three-button placket with logo buttons C&B pennant at back half moon. Logo pennant tape at finside back neck. Open sleeves. Side vents. Drop front shoulder. C&B tour logo on left sleeve. Moisture wicking.

Men's Sizes: S-XXXL **35426**

Ladies' Championship Polo - Men's Championship Polo - 65% Cotton and 35% polyester with double faced collar. Three-button placket with logo buttons C&B pennant at back half moon. Logo pennant tape at finside back neck. Open sleeves. Side vents. Drop front shoulder. C&B tour logo on left sleeve. Moisture wicking.

Ladies' Sizes: S-XXL **35427**



[AGH]
MEN ONLY

[CCH]
MEN ONLY

[NVH]
MEN ONLY

[BL]
LADIES ONLY

[AVAILABLE FROM 10.10.13]

Broadview

Modern wardrobe essentials.

Men's Broadview V-neck Sweater - 100% cotton. 12-gauge knit. Fully fashioned construction. Jersey stitch. V-neck styling. Rib detail at shoulder. Two-tone stripe detail at back yoke. English shoulders. 1x1 rib sleeve cuff and bottom hem. Tonal outside linking at seams. Machine wash.

Men's Sizes: S-XXXL

MCS01842

Ladies' Broadview Scoop Neck Sweater - 100% cotton. 12-gauge knit. Fully fashioned construction. Jersey and reverse jersey stitches. Linked seams. Scoop neck. Full needle rib detail at neck trim. Drop shoulders. 1x1 rib hem and covered button cuffs. Machine wash.

Ladies' Sizes: XS-XXXL

LCS04758

Overtime

Warm, comfortable, classic.

Men's Overtime Half Zip - 100% cotton heathered flatback rib. 2x2 rib collar. Contrast exposed zipper. Back yoke. Forward shoulder. Contrast coverstitching. 2x2 rib cuffs. Open bottom. Tonal C&B pennant embroidery at back yoke. Machine wash.

Men's Sizes: S-XXXL

MCK00492

Big & Tall Sizes: 1XB-5XB, LT-4XT

BCK00492



MONARCH (MNC)

BLACK (BL)

HUNTER (HT)

NAVY BLUE (NVBU)

CHARCOAL HEATHER/BLACK
(CCHBL)



Everett v-neck

Basic, Yet Exceptional.

Men's Everett v-neck - English shoulder 1x1 rib collar, hem and cuff. Modern V-neck in 100% Extra fine merino Wool. C&B pennant at back half moon. C&B tour logo on left sleeve. 12 gauge. Fully fashioned construction. Linked seams.

Men's Sizes: S-XXXL

351033

Ladies' Everett v-neck - English shoulder 1x1 rib collar, hem and cuff. Modern V-neck in 100% Extra fine merino Wool. C&B pennant at back half moon. C&B tour logo on left sleeve. 12 gauge. Fully fashioned construction. Linked seams.

Ladies' Sizes: S-XXL

35517



[SPB]



[SYH]



[BL]

[BSL]

[POH]



[BLH]

[NVH]

[MDGH]

[AVAILABLE FROM 07.08.13]

Fairfield Full zip

Durable performance for everyday wear.

Men's Fairfield Full Zip Sweater - 85% Cotton/Coton, 15% Polyester. Plaited Rib. 1x1 rib collar with stripe detail at inside. Full zip. Chest zipper pocket. 1x1 rib trim at side body. Logo pennant at side body, patch pockets, contrast rack stitching. 1x1 rib cuff with stripe on the inside. Acid garment washed. Machine wash

Men's Sizes: S-XXL

MDK00061

[AVAILABLE FROM 10.10.13]

Forest Park Half Zip

Layer yourself in luxury.

Men's Forest Park Half Zip - 97% cotton, 3% spandex double jacquard. Mock neck. Half zip with double welt placket. Houndstooth pattern interior. Back yoke. Elbow patches. C&B tonal pennant embroidery at back collar. Self-fabric hem and cuffs. Machine Wash.

Men's Sizes: S-XXXL

Big & Tall Sizes: 1XB-5XB/LT-4XT

MCK00760

BCK00760



[AEGEN]

[MYPOL]

Hadden Reversible Half zip

Handsome, comfortable, classic.

Men's Hadden Reversible Half Zip - 100% Cotton. Flatback Rib 2x2 rib collar. Contrast exposed zipper. Half zip. Back yoke detail. Forward shoulder. Reversible. Tonal cover stitching, 2x2 rib cuff. Heather fabric. Flatback jersey. Machine Wash.

Men's Sizes: S-XXL

MCK00736



[AGH]



[NVH]



[CCH]



[BL]

Broadview Half Zip Sweater

Modern wardrobe essentials.

Men's Broadview Half Zip Sweater - 100% combed cotton. Mock neck. Half zip. Full gauge covered placket. Two-tone stripe at inside neck and back yoke. 2x2 rib collar, cuff, hem, and shoulder piecing. 12 gauge jersey, fully fashioned construction. Outside linking at seams. Machine wash.

Men's Sizes: S-XXXL

MCS01424

Big & Tall Sizes: 1XB-5XB/LT-4XT

BCS01424



[AGH]



[BL]



[58 NAVY]
MEN ONLY



[CCH]



[NVH]



[99 BLACK]



[99 BLACK]

Broadview Sweater Vest

Modern wardrobe essentials.

Men's Broadview V-neck Sweater Vest - 100% combed cotton. V-neck styling. Rib detail at shoulders. Two tone stripe detail at inside yoke. 1x1 rib bottom hem and neck. 12 gauge. Outside linking at seams. Fully fashioned construction. Jersey stitch. Machine wash.

Men's Sizes: S-XXXL MCS01422
Big & Tall Sizes: 1XB-5XB/LT-4XT BCS01422

Everett V-neck Vest

Designed to follow your movements.

Men's and Ladies' Everett V-neck Vest - 1x1 rib collar and hem. English shoulder. C&B pennant at backneck. 12 gauge. Fully fashioned construction. Linked seams. Modern V-neck sweater made of 100 % high-quality Merino wool. Machine wash.

Men's Sizes: S-XXXL 351171
Ladies' Sizes: XS-XXL 351172



[AGH]



[NVH]



[CCH]



[BL]



[ALS]



[CHT]



[SCH]



[BL]



[NVBU]



[RFL]

[AVAILABLE FROM 10.10.13]

Broadview Cardigan wmn

Modern wardrobe essentials.

Ladies' Broadview Cardigan - 100% combed cotton. Jewel neckline. Rib detail at neck trim. Raglan sleeves. Two-way zip closure. 2x2 rib hem. 2x2 rib cuffs. 12 gauge. Fully fashioned construction. Jersey stitch. Linked seams. Machine wash.

Ladies' Sizes : S-XXL

LCS04769

[AVAILABLE FROM 25.09.13]

3/4 Sleeve Highland Park Cowl

Style for wherever your day takes you.

Ladies' CB DryTec 3/4 Sleeve Highland Park Cowl - 94% polyester, 6% spandex tonal striped jersey. Cowl neckline. Straight hem. Open sleeves. Tonal C&B pennant embroidery at left sleeve hem. Moisture-wicking. Machine wash.

Ladies' Sizes: S-XXL

LCK02503



[AVAILABLE FROM 10.10.13]

Vancouver Full Zip wmn

Cozy and chic.

Ladies' Vancouver Full Zip - 95% cotton, 5% spandex french terry. Portrait collar with 2x2 rib. Front yoke with gathers. Full zip. Slightly dropped shoulders. Coil zip with satin tape pull. Satin ribbon trim at inside back neck. Scoop front pockets. Deep 2x2 rib cuffs and hem. C&B tonal pennant embroidery at back half moon. Angled cuff with ruching. Machine Wash.

Ladies' Sizes: S-XXL

LCK02532

Squeeze Play

Fashion-forward active layering.

Ladies' Squeeze Play Full Zip - 100% cotton French terry. Funnel neck styling. Inside rib collar. Natural shoulder. Back half moon. Cuffed hem and sleeves. Front pockets. Tonal C&B pennant embroidery at back half moon. Machine wash.

Ladies' Sizes: XS-XXXL

LCK02423

FRENCH GREY (FRG)



SHELL (SH)



Arboretum

Active Layering with sophisticated style.

Ladies' Arboretum Full Zip Fleece - 100% polyester fleece with hybrid styling. Self-fabric mock. Full zip with exposed silver zipper. Half moon. Shoulder, neck, and side panel piecing. Open sleeve with cuff. Front pockets. Tonal C&B pennant embroidery at back half moon. Machine wash.

Ladies' Sizes: XS-XXXL

LCK02460

Ladies' Arboretum Full Zip Fleece Vest - 100% polyester fleece and hybrid styling. Self-fabric mock. Full zip with exposed silver zipper. Shoulder, neck and side panel piecing. Binding at armhole. Front Pockets. Tonal C&B pennant embroidery at back half moon. Machine wash. Available in BL and SH only.

Ladies' Sizes: XS-XXXL

LCK02460

BLACK (BL)

SHELL (SH)

RIBBON PINK (RBP)

Epic Easy Care Nailshead

A crisp, professional classic that's great for travel.

Men's L/S Epic Easy Care Nailshead Shirt - 60% Cotton, 40% polyester doobby. Wrinkle-resistant. Button-down collar. Double back pleats. Barrel cuffs. Chest patch pocket. Tonal C&B pennant embroidery at left cuff. Machine wash.

Men's Sizes: S-XXXL

MCW01711

Big & Tall Sizes: 1XB-5XB, LT-4XT

BCW01711

Men's S/S* Sizes: S-XXXL

MCW01797

Big & Tall S/S* Sizes: 1XB-5XB, LT-4XT

BCW01797

*Available in ALS, BL, FB, WH, and fashion colors CDR, OPL, RP and SG.

Ladies' L/S Epic Easy Care Nailshead Shirt - 60% Cotton, 40% polyester doobby. Wrinkle-resistant. Y-neck placket. Princess seams. Accent zigzag stitching. Novelty buttons. Button sleeve placket on cuff. Tonal C&B pennant embroidery at inside placket. Machine wash.

Ladies' Sizes: XS-XXXL

LCW04124



Men's - MCW01711



Men's S/S* - MCW01797



Ladies' LCW04124



SHIRTS



Epic Easy Care Stripe

A sharp look that travels with ease.

Ladies' L/S Epic Easy Care Pin Stripe Shirt - 60% cotton, 40% polyester poplin. Wrinkle-resistant. Princess seams. Darts for feminine shaping. Pick stitch detailing. Piping at inside back neck. White logo buttons. Tonal C&B pennant embroidery at inside placket. Machine wash.

Ladies' Sizes: XS-XXXL

LCW08395

Men's L/S Epic Easy Care Pin Stripe Shirt - 60% cotton, 40% polyester poplin. Wrinkle-resistant. Button-down collar. Double back pleat. Barrel cuffs with tonal C&B pennant embroidery at left cuff. Chest patch pocket. Machine wash.

Men's Sizes: S-XXXL

Big & Tall Sizes: 1XB-5XB, LT-4XT

MCW09185

BCW09185



SHIRTS

Cutter Bengal Stripe

Clean and crisp essentials.

Men's Cutter Bengal Stripe Shirt -100% cotton poplin. Button-down collar. Contrast button thread on collar stand. Contrast fabric at inside back yoke, inside cuff and sleeve placket. Crest print at inside back yoke. Barrel cuff. Back box pleat. Tonal C&B pennant embroidery at left cuff. Chest patch pocket. Machine wash.

L/S Men's Sizes: S-XXXL
L/S Big & Tall Sizes: 1XB-5XB, LT-4XT
S/S Men's Sizes: S-XXXL
S/S Big & Tall Sizes: 1XB-5XB, LT-4XT

MCW01743
BCW01743
MCW01791
BCW01791



Gatewood

Clean and crisp with fashionable details.

Ladies' 3/4 Sleeve Gatewood Tunic -100% cotton poplin. Self-fabric collar. Collar stand. Partial button front with logo buttons. Forward shoulders. Ruched bib detail. Ruching at back yoke. Curved hem. Rolled cuffs. Tonal C&B pennant embroidery at back yoke. Machine wash.

Ladies' Sizes: XS-XXXL **LCW04132**



WHITE (WH)



Georgetown Stripe

Comfortable, casual—ininitely wearable.

Men's L/S Georgetown Stripe Shirt -100% cotton poplin. Vertical stripe. Collar stand. Forward shoulders. Traditional placket with C&B logo buttons. Barrel cuff. Back box pleat. Chest patch pocket. Tonal C&B pennant embroidery at left cuff. Machine wash.

Men's Sizes: S-XXXL **MCW01835**





BLACK (BL)



BITTERSWEET (BTS)
MEN'S ONLY



[ONX]

[BL]

[NVBU]

CB WeatherTec™ Granite Falls

A sophisticated modern classic.

Men's CB WeatherTec Granite Falls Car Coat -100% polyester plain weave. Wind and water-resistant. Stand collar. Full zip with snap closure. Piecing at shoulders. Quilt stitch detail. Contrast fabric trim detailing. Double entry front pockets with flaps and zipper. Tonal C&B pennant embroidery at inside back yoke. Machine wash.

Men's Sizes: S-XXXL
Big & Tall Sizes: 1XB-5XB, LT-4XT

MCO00896
BCO00896

Ladies' WeatherTec Granite Falls Jacket -100% polyester plain weave. Wind and water-resistant. Fully lined. Mock neck. Hidden full zip with wind flap and snap closure. Princess seaming. Quilting details. Pieced cuffs with snaps. Front welt pockets with zippers. Logo at center back yoke. Tonal C&B pennant embroidery at inside back yoke. Machine wash.

Ladies' Sizes: XS-XXXL

LCO01196

CB WeatherTec™ Mason

Handsome outerwear for modern lifestyles.

Men's CB WeatherTec Mason Full Zip - 100% polyester twill. Wind and water-resistant. Full zip. Forward shoulders. Back yoke. Body seaming. Front pockets with binding. Tonal C&B pennant embroidery at back neck. Machine wash.

Men's Sizes: S-XXXL
Big & Tall Sizes: 1XB-5XB, LT-4XT

MCO00901
BCO00901

JACKETS



[BL]

[EXH]

[NVBU]

[PCG]

Pearl V-neck Tee

Men's Pearl V-neck Tee - V-neck styling. Back yoke with iconic bartacking detail. Forward shoulder. Ladder stitch finish at sleeve and bottom opening. Logo tab placed at side seam. Sublime wash. 100% Cotton Jersey

Men's Sizes: S-XXL

MDK00006



T-SHIRTS



[AB]

[PCG]

[FM]



[JCT]

[POR]

Vashon Striped v-neck

Men's Vashon Striped V-neck - 99% Cotton/Coton, 1% Polyester Jersey. V-neck styling. Grosgrain at center back neck. Iconic bartacking detail at back yoke. Ladder stitching at cuff and bottom hem. Logo tab placed at side seam. garment enzyme wash

Men's Sizes: S-XXL

MDK00043

Arbor heights v-neck

Men's Arbor Heights V-neck 100% Cotton/Coton, Slub Jersey. V-neck styling. Grosgrain at center back neck. Iconic bartacking detail at back yoke. Raw edge finished seams. Ladder stitching at cuff and bottom hem. Logo tab placed at side seam. 30's double slub jersey fabric. Garment dyed. Garment enzyme wash

Men's Sizes: S-XXL

MDK00044

24 CB DENIM [LIMITED STOCK]

POLOS



[NVBU]

[OLB]

Market Polo

Men's Market Polo -100% Cotton/Coton. Pique. Collar stand. Rib collar. Three-button placket. Cuffed hem. Side vents. Ribbed cuff. Grosgrain at center back neck. Iconic bartacking detail. Iconic tape detailing. Logo patch. Logo tab placed at side seam. Chest patch pocket. Pigment garment dye. Enzyme wash

Men's Sizes: S-XXL

MDK0003



Hinman Check

Men's L/S Hinman Check - 100% Cotton/Coton. Herringbone. Straight collar. Front placket. Back yoke. Straight back. Chest pocket with tape trim. Chest pocket(s) with button flaps. Clean finished hem. Shirt-tail hem

Men's Sizes: S-XXL
MDW00030



Moxee Plaid L/S

Men's L/S Moxee Plaid - 100% Cotton/Coton. Herringbone. Straight collar. Snap closure. Back yoke. Straight back. Clean finished hem. Shirt-tail hem. Square cuff. 1/8" double needle topstitch on all seams.

Men's Sizes: S-XXL
MDW00033



Holden Check L/S

Men's L/S Holden Check - 100% Cotton/Coton. Plain Weave. Straight collar. Chambray trim at inside collar stand, under placket, inside cuff & sleeve placket, bottom vents. Chambray piping trim at cuff & back yoke. Contrast button thread color at top collar button. Forward shoulder. Traditional placket. 1/8" double needle topstitch on all seams. Chain stitch detail at chest pockets. Iconic double bartack detail at chest pocket. Logo tab placed at chest pocket. Seersucker check. 40's yarns. Garment enzyme wash

Men's Sizes: S-XXL
MDW00061



Oakes Shadow Plaid L/S

Men's L/S Oakes Shadow Plaid - 100% Cotton/Coton. Plain Weave. Straight collar. Print fabric trim at inside collar stand, bottom vents, bottom hem trim, inside cuff. Contrast button thread color at top collar button. Forward shoulder. Traditional placket. 1/8" double needle topstitch on all seams. Iconic double bartack detail at sleeve placket. Logo tab placed at sleeve placket. Shadow plaid. 80's yarns. Medium acid wash

Men's Sizes: S-XXL
MDW00062



Vale Denim Shirt L/S

Men's L/S Vale Denim Shirt - 100% Cotton/Coton. Plain Weave. Straight collar. Novelty trim at inside collar stand, inside yoke, inside cuff & sleeve placket, bottom vents. Contrast button thread color at top collar button. Forward shoulder. Traditional placket. 1/4" double needle topstitch on all seams. Iconic double bartack detail at sleeve placket & pocket. Logo tab placed pocket. Double pockets at chest. Light weight denim. Acid garment wash

Men's Sizes: S-XXL
MDW00067



Denny Creek Cardigan

Men's Denny Creek Cardigan - 100% Fully Combed Cotton/Coton. Tubular finish at neck. Button front. English shoulder. 1x1 rib hem 1x1 rib cuff. 14 gauge. Fully fashioned construction. Linked seams

Men's Sizes: S-XXL

MDS00009



[AVAILABLE FROM 07.08.13]

Morgan Junction Rugby

Men's L/S Morgan Junction Rugby - 100% Cotton/Coton. Jersey.

Contrast fabric collar and placket. 3 button placket. Stripe body. Forward shoulder. Logo print & applique at chest. Applique print at back body. 1x1 rib cuff. 1/4" 2 needle top stitching. Logo tab at lower right body, double bar tack detail. Z twist + S twist heather stripe pattern jersey. Garment wash.

Men's Sizes: S-XXL

MDK00045



Tangle Town V-neck

100% Cotton Combed

Men's Tangle Town V-neck Sweater- Tubular finish at neck. V-neck styling. english shoulder. 3x3 rib hem and cuff. 12 gauge. Fully fashioned construction. Pigment garment dye. enzyme wash.

Ladies' Sizes: XS-XXXL

MDS00006



[CC]

[NF]

Howsen Crew

Men's L/S Howsen Crew - 100% Cotton/Coton. Jersey. Crew neck. Forward shoulder. Clean finished hem. Ladder stitch. Stripe pattern. Iconic bartacking detail. Logo tab placed at side seam

Men's Sizes: S-XXL

MDK00024



Seven Hills Shawl

Men's Seven Hills Shawl -100% Fully Combed Cotton/Coton. 1x1 rib collar. Shawl collar. Natural shoulder. Rib detail at shoulder. 1x1 rib hem. 1x1 rib cuff. 7 gauge. Fully fashioned construction

Men's Sizes: S-XXL

MCS01822



[SRF]

[NF]



[NF]

[SYC]



Blanchard Rib v-neck

Men's Blanchard Rib V-neck - 100% Fully Combed Cotton/Coton. 2x2 rib collar. V-neck styling. English shoulder. 2 x 2 rib stitch. 7 gauge. Fully fashioned construction. Linked seams

Men's Sizes: S-XXL

MDS00017

Yesler Garment Dye Full Zip

Men's Yesler Garment Dye Full Zip - 100% Cotton/Coton. Pique. Hood with drawcord. Full zip. Pieced front and back body. Front welt pocket(s). Forward shoulder. 1x1 rib hem. 1x1 rib cuff. Grosgrain at center back neck

Men's Sizes: S-XXL

MDK00027

Downtown Jacket

A modern jacket with a cool edge.

Men's Downtown Jacket - 100% cotton peached twill. Fully lined. Full zip with exposed zipper. Drop front and back shoulders. Stitch detail at zipper and pockets. 1x1 rib cuff and hem. Front single welt pockets. Interior pocket. Tonal C&B pennant embroidery at back neck. Machine wash.

Men's Sizes: S-XXXL

MCO00889



CHARCOAL
(CC)

PORTOBELLO
(PTO)

JACKETS



SEAPLANE (SPN)

SANDPOINT (SAP)

VIEW RIDGE (VWR)

Westlake Relaxed Straight Leg Jean

Genuine style in weathered denim.

100% cotton. 12 oz. denim. Relaxed fit. Five pocket styling. Zip fly. Contrast pocket lining. 17" bottom opening. Logo hardware. Leather patch. Machine wash.

Men's:

Sizes:

- 30 inseam x 30-42 waist;
- 32 inseam x 30-42 waist;
- 34 inseam x 30-42 waist

MDB00002



SANDPOINT (SAP)

SEAPLANE (SPN)

VIEW RIDGE (VWR)

Belltown Slim leg Jean

Relaxed comfort, authentic fit.

Button fly. Detailed back patch pockets, coin pocket. Five pocket styling. Printed pocketing. 15" leg opening. contrast chain stitch and pocket print fabric inside waistband. 100% Cotton Twill Denim

Men's:

Sizes:

- 30 inseam x 30-42 waist;
- 32 inseam x 30-42 waist;
- 34 inseam x 30-42 waist

MDB00003



BASALT (BAT)

CASCADE (CSD)

PURE BLACK (PBK)

JEANS

CB DryTec™ Kingston Piqué

Our best wicking, true performance polo.

Men's CB DryTec Kingston Piqué Polo -100% polyester piqué. Moisture wicking. Double-faced collar. Two-button placket with self-fabric piping and dyed-to-match logo buttons. Back half moon. Forward shoulders. Open sleeves. Side vents. Tonal C&B pennant embroidery at left sleeve hem. Machine wash.

Men's Sizes: S-XXXL

MCK00415

Ladies' CB DryTec Kingston Piqué Polo -100% polyester piqué. Moisture wicking. Self-fabric collar. Three-button placket with dyed-to-match logo buttons. Forward shoulders. Princess seams. Open sleeves. Side vents. Tonal C&B pennant embroidery at back half moon. Machine wash.

Ladies' Sizes: XS-XXXL

LCK02351



MEN'S ONYX

LADIES' JASPER



RED (RD)

WHITE (WH)



JASPER (JSP)

ONYX (ONX)

WHITE (WH)

COHO (COO)
FASHION COLOR
MEN'S ONLY

BLACK (BL)

SEA GREEN (SG)

NAVY BLUE (NVBU)

ATLAS (ALS)

RED (RD)

PALE YELLOW (PY)

PoloS

CB DryTec™ Willows

A lightweight polo in bold, bright colors.

Men's CB DryTec Willows Polo - 100% polyester jersey. Moisture wicking. Double-faced collar. Three-button placket with logo buttons. Back half moon. Open sleeves. Side vents. Tonal C&B pennant embroidery at left sleeve hem. Machine wash.

Men's Sizes: S-XXXL

MCK00497



[ALS]



[BL]



[CDR]



[COO]



[JSP]



[SEA]



[NVBU]



[PA]



[PY]



[SG]



[WH]



[MEN'S AVAILABLE FROM 14.10.13]

[LADIES' AVAILABLE FROM 02.10.13]

Northgate Polo

Built for performance.

Men's and Ladies' CB DryTec Northgate Polo - 100% polyester double knit square jacquard. Self collar. Self-fabric neck tape at inside back neck. Three-button placket with diagonal stitching. Forward shoulders. Open sleeves. Side vents. Solid. Tonal C&B pennant embroidery at left sleeve hem. Dyed to match logo buttons. Moisture-wicking. Sun protection rating of 50 UPF. Machine wash.

Men's Sizes: S-XXXL

Ladies' Sizes: S-XXL

MCK00753

LCK02501



[ALS]



[BL]



[ALS] [CDR] [CLO] [CLP] [NVBU] [PGR] [TBL] [WH]

PoloS

ATLAS (ALS)

BLACK (BL)

CARDINAL (CDR)

WHITE (WH)

NAVY BLUE (NVBU)

COHO (COO)

JASPER (JSP)



[ALS] [BL] [CDR] [WH] [NVBU] [JSP]

CB DryTec™ Alder

Sporty and feminine.

Ladies' CB DryTec Alder Polo - 100% polyester jersey. Moisture wicking. Self-fabric collar. Contrast collar detail at collar band and under placket. Three-button rounded placket with feminine ruching details. Logo buttons. Open sleeves. Curved hem. Tonal C&B pennant embroidery at back half moon. Machine wash.

Ladies' Sizes: XS-XXXL
Ladies' White Sizes: XS-XXXL

LCK02499
LCK02500



PAPAYA/WHITE
(PAWH)



OPAL/WHITE (OPLWH) SEAGREEN/WHITE (SGWH) LOTUS/WHITE (LTWH) CUTTER PINK/WHITE (CPIWH)

Sweeten Polo

Dependable style, durable construction.

Men's Sweeten Polo - 100% polyester jersey. Moisture wicking. Double-faced collar. Three-button placket. Back half moon. Side vents. Open sleeves. Horizontal stripe. Tonal C&B pennant embroidery at left sleeve hem. Machine wash.

Men's Sizes: S-XXXL

MCK00331

POLOS



[AVAILABLE FROM 06.09.13]

Green Lake Half Zip

A layer made for outdoor adventures.

Men's CB DryTec Green Lake Half Zip - 100% polyester jersey heather. Mock collar with inside contrast color. Half zip. Contrast cover stitching. C&B heat transfer at back neck. Moisture-wicking. Machine Wash.

Men's Sizes: S-XXXL

MCK00805

Ladies' CB DryTec Green Lake Full Zip - 100% polyester jersey heather. Mock collar with inside contrast color. Full zip. Front single welt pockets. Contrast cover stitching. Self-fabric cuffs. C&B heat transfer at back neck. Moisture-wicking. Machine Wash.

Ladies' Sizes: S-XXL

LCK02509



[MEN'S AVAILABLE FROM 06.09.13]

Cavanaugh v-neck wmn

Classic comfort with the perfect fit.

Ladies' Cavanaugh V-neck - 100% polyester jersey. Moisture-wicking. Funnel V-neck styling. 3/4 sleeve with open hem. Tonal C&B pennant embroidery at left sleeve hem. Sun protection of 15+ UPF. Machine wash.

Ladies' Sizes: S-XXL

LCK02510



[CDR]

CB DryTec™ Choice

All day comfort, flattering fit.

Ladies' CB DryTec L/S Choice Zip Mock - 97% polyester, 3% spandex jersey. Moisture wicking. Half zip with contrast welt. Contrast inner collar. Contrast cover stitching. Contrast zipper. Curved hem. Open sleeves. Tonal C&B pennant embroidery at back half moon. Machine wash.

Ladies' Sizes: XS-XXXL

LCK02367



[ALS]



[BL]



[CLO]



[CLP]



[CP]



[DRM]



[HT]



[HUH]



[JSP]



[NVBU]



[SLF]



[TBL]



[TNO]



[WH]



SWEATERS



[NVBU AVAILABLE FROM 06.09.13]

In Motion Mock wmn

Moisture wicking performance with fresh style.

Ladies' CB DryTec Fleece In Motion Mock - 89% polyester, 11% spandex fleece. Self-fabric mock. Chin guard. Half zip. Logo zip pull. Princess seams. Tonal C&B pennant heat transfer at back half moon. Fleece at inside. Moisture-wicking. Fashion colors have limited availability.

Ladies' Sizes: S-XXL

LCK02425



Montlake Half Zip

Fresh colors that perform in style.

Men's CB DryTec Montlake Half Zip Fleece - 89% polyester, 11% spandex fleece. Self-fabric mock. Chin guard. Half zip with hidden zipper. Raglan sleeves. Sleeve seaming detail. Tonal C&B pennant heat transfer at back neck. Moisture-wicking. Machine wash. Fashion colors have limited availability.

Men's Sizes: S-XXL

MCK00637



[BL]



[BRT]



[IG]



[ALS]



[NVBU]



[SEF]



[WH]



[JSP]

CB DryTec™ Mogul

Sporty essentials for active lifestyles.

Ladies' CB DryTec L/S Mogul V-neck - 100% polyester mesh stripe. Moisture wicking. V-neck styling. Natural shoulders. Seaming details with coverstitching. Princess seams. Bias cut piecing details. Open sleeves with thumbholes. Tonal C&B pennant embroidery at back half moon. Machine wash.

Ladies' Sizes: XS-XXXL

LCK02464



[ALS]

[BL]

[CDR]

[CFT]

[NVBU]

[ONX]

[SEA]

[WH]

SWEATERS

CARDINAL RED (CDR)

ATLAS (ALS)

NAVY BLUE (NVBU)

WHITE (WH)

ONYX (ONX)

SEAPORT (SEA)

BLACK (BL)

CONFETTI (CFT)
LADIES' ONLY



Bright Red (2430)
Men's only



Black (2999)



Silver (2926)
Men's only



Lizzard (2639)
Men's only



Black (2999)

Lord Rain

Advanced rain clothing.

Lord Rain Jacket - 100% polyester. Advanced rain jacket made of VentAir, a highly functional, lightweight and silent fabric for a smooth and quiet swing. Ergonomic construction and pre-shaped arms for a perfect fit and optimal freedom of movement. Ventilation in the back.

Men's Sizes: XS-XXL

351041

Ladies' Sizes: S-XL

351135

Lord Rain Trousers - 100% polyester. Advanced rain pants made of VentAir Light, a highly functional, lightweight and silent fabric for a smooth and quiet swing. Waterproof zippers.

Men's Sizes: XS-XXL

351042

Ladies' Sizes: XS-XXL

351136

JACKETS AND PANTS



[AUR]

[BL]

[DRM]

[HUH]

[WH]

CB WindTec™ Echo

Lightweight and breathable for high performance.

Ladies' CB WindTec Echo Half Sleeve Half Zip - 100% polyester ripstop. Breathable. Wind and water-resistant. Mock neck. Chin guard. Contrast exposed half zip. Contrast cover stitching and drawcord hem. Raglan sleeve. Zip pull. C&B pennant at back neck. Machine wash.

Ladies' Sizes: XS-XL

LCO01192



LADIES' HUSH

LADIES' BLACK



MEN'S ALERT/POLISHED

LADIES' DREAM

MEN'S
BLUESPAN/NAVY BLUE
(BLPNV)

MEN'S
NAVY BLUE/WHITE
(NVBW)

MEN'S
ALERT/POLISHED
(ALPOL)

MEN'S
BLACK/WHITE
(BLWH)

MEN'S
FLAIR/WHITE
(FLWH)

LADIES'
DREAM (DRM)

LADIES'
BLACK (BL)

LADIES'
AURORA (AUR)

LADIES'
WHITE (WH)

LADIES'
HUSH (HUH)

CB WindTec™ Echo

Lightweight and breathable for high performance.

Men's CB WindTec Echo Half Sleeve Half Zip - 100% polyester ripstop. Breathable. Wind and water-resistant. Fully lined. Self fabric mock. Chin guard. Half zip with zip pull. Contrast cover stitching. Raglan sleeve. C&B pennant at back half moon. Machine wash.

Men's Sizes: S-XXL

MCO00885



[BLWH]



[NVBW]



[ALPOL]



[BLPNV]



[FLWH]



MEN'S
FLAIR/WHITE

MEN'S
ALERT/POLISHED

JACKETS AND WIND

CB WeatherTec™ Mount Adams

An outdoor essential for active lifestyles.

Men's CB WeatherTec Mount Adams Full Zip - 100% polyester double knit. Fabric waterproof to 5,000 mm and breathable 560 g/m²/24 hrs. Full zip with contrast welts. Piped raglan seaming. Zippered chest and front pockets. Silver C&B pennant heat transfer at back neck. Machine wash.

Men's Sizes: XS-XXXL

MCO00908



[BLWH]



[ONXWH]



[CDBL]



[NVBW]



[WHBL]



[CPBL]

CB WeatherTec™ Vital

High performance technical layering.

Men's CB WeatherTec S/S Vital Half Zip - 100% polyester plain weave. Windproof. Fabric waterproof to 10,000 mm and breathable 5,000 g/m²/24 hrs. Fully lined. Contrast piecing at front and back body. Self-fabric mock with tipped rib inside collar. Raised at back neck for better wind and water protection. Chin guard. Hidden half zip placket. Front pockets with zippers. Drop tail. Drawstring hem. Silver CB pennant heat transfer at back neck and left sleeve. Machine wash.

Men's Sizes: S-XXXL

MCO00890

Men's CB WeatherTec Vital Half Zip - 100% polyester plain weave. Windproof. Fabric waterproof to 10,000 mm and breathable 5,000 g/m²/24 hrs. Fully lined. Contrast piecing at front and back body. Self-fabric mock with tipped rib inside collar. Raised at back neck for better wind and water protection. Chin guard. Hidden half zip placket. Front pockets with zippers. Velcro tab closure at sleeve hem. Drop tail. Drawstring hem. Silver CB pennant heat transfer at back neck and left sleeve. Machine wash.

Men's Sizes: S-XXXL

MCO00892



SPIRE (SRI)

WHITE (WH)

SEAFAIR (SEF)

BLACK (BL)

JACKETS AND WIND





CARDINAL RED (CDR)

CB DryTec™ Kingsgate Embossed

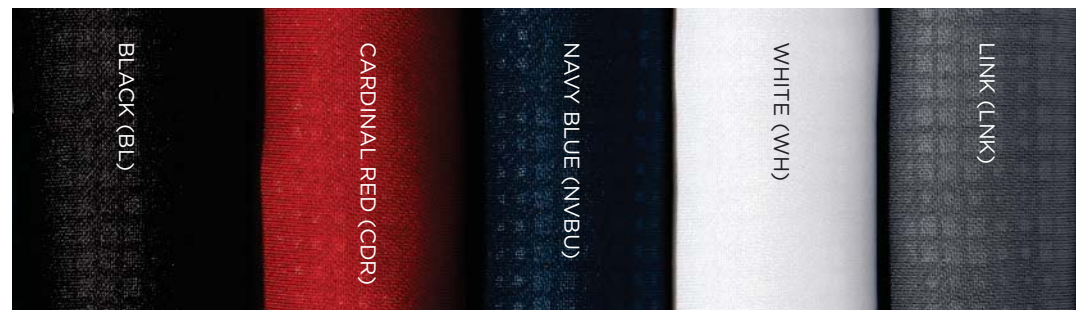
Sleek, comfortable activewear.

Men's CB DryTec Kingsgate Embossed Half Zip

- 100% polyester fleece. Moisture wicking. Self-fabric mock. Chin guard. Half zip with exposed zipper. Embossed front body. Seaming details. Embossed sleeve detail. Front welt pockets. Self-fabric hem and cuffs. Silver C&B pennant heat transfer at back neck. Machine wash.

Men's Sizes: S-XXXL

MCK00662





[WHITE 00]

[RED 40]

[BLUESPAN/CADANSE 510]

[BLACK 99]

[NAVY/WHITE 64]

[NAVY 60]

[RED /WHITE 44]

[WHITE 00]



Flexi Pinstripe Cap

100% Polyester

Flex technology with stretch fabric and flex band for better fit. Contrast piping and pinstripe design detail on front. Pre shaped. CB logo on front.

Cap Sizes: S/M, L/XL

351197

[BRIGHT RED 35]



[BLUESPAN 510]



Visor Cap

100% Polyester

Adjustable velcro strap. Contrast piping details. CB logo on front with additional logo details on outer back rim.

Cap Sizes: S/M, L/XL

351198

[NAVY WHITE 58]



[NAVY 58]



CB Headband

100% Polyester Microlite

Multi functional Head band. No side seam; raw top edge. Tone on tone CB pattern with pennant on front.

One Size

351202

Stripe Hat

100% Acrylic
CB logo on front. No side seams.

One Size

351199



[BLUESPAN 510]

[NAVY 58]

Classic Hat

100% Acrylic
A warm hat that can be folded down for a more baggy street look.

One Size

351115



[BLACK 99]

[NAVY 58]

[WHITE 00]

[RED 35]

Oversize Hat

100% Acrylic 8gg
Classic warm knit hat with CB logo around circumference.

One Size

351198



[WHITE 00]

[RED 35]

[CADANCE 611]

[BLACK 99]

[NAVY 58]



[BLACK 1999]

Lord Rain Hat

100% Polyester

Lord Rain hat with adjustable elastic cord

One Size

0401754036-99

[BLACK 1999]



[BLACK 1999]

Boston Bag

Practical and Modern

Separate compartment for shoes. Convenient pocket on the side and inside the bag.

One Size

35905-999-0



[BLACK 1999]

Umbrella

Carbone/Polyester

Lightweight umbrella for a stylish appearance on rainy days on the course or in the city.

One Size

351073

Sock Regular

The Ultimate golf Sock

53% Polyester Coolmax 45% Polyamide 2% Lycra . The ultimate golf sock designed for optimal performance. Made of CoolMax® for effective moisture transport and polyamide for durability. Air-channeled fabric structure provides extra ventilation and arch ribs make sure the sock stays in place.

Sizes: 34/36 - 46/48

351078



[BLACK 1999]



[WHITE 1900]

Soft Shaftless

Excellent Golf Sock

53% Polyester Coolmax 45% Polyamide 2% Lycra. Excellent golf sock without shaft for optimal performance on warm summer days. Made of CoolMax® for effective moisture transport and polyamide for durability. Arch ribs make sure the sock stays in place.

Sizes: 34/36 - 46/48

351111

[BLACK 1999]

Index

A

ALDER POLO WMN (WILLOWS POLO MEN)	LCK02499	35
ARBOR HEIGHTS V-NECK	MDK00044	23
ARBORETUM FULL ZIP VEST WMN	LCK02477	17
ARBORETUM FULL ZIP WMN	LCK02460	17

B

BELLTOWN STRAIGHT SLIM JEAN	MDB00003	31
BLANCHARD RIB V-NECK	MDS00017	29
BOSTON BAG	35905-999-0	49

BROADVIEW CARDIGAN WMN	LCS04769	15
BROADVIEW HALF ZIP SWEATER	MCS01424	13
BROADVIEW SCOOP NECK SWEATER	LCS04758	10
BROADVIEW SWEATER VEST	MCS01422	14
BROADVIEW V-NECK SWEATER	MCS01842	10

C

CAVANAUGH VNECK WMN	LCK02510	36
CHAMPIONSHIP	35426	09
CHAMPIONSHIP WMN	35427	09
CHOICE ZIP MOCK WMN	LCK02367	37
CLASSIC HAT	351115	48
CUTTER BENGAL STRIPE L/S	MCW01743	20
CUTTER BENGAL STRIPE S/S	MCW01791	20

D

DENNY CREEK CARDIGAN	MDS00009	26
DOWNTOWN JACKET	MCO00889	30

E

ECHO HALF SLEEVE HALF ZIP WMN	LCO01192	42
ECHO HALF SLEEVE HALFT ZIP	MCO00885	43
ELLIOTT BAY POLO	MCK00421	04
ELLIOTT BAY POLO WMN	LCK02357	05
EPIC EASY CARE PIN STRIPE SHIRT	MCW09185	19
EPIC EASY CARE PIN STRIPE SHIRT WMN	LCW08395	19
EPIC EASY CARE NAILSHEAD	MCW01711	18
EPIC EASY CARE NAILSHEAD S/S	MCW01797	18
EPIC EASY CARE NAILSHEAD WMN	LCW04124	18
EVERETT V-NECK	351033	11
EVERETT V-NECK WMN	35517	11
EVERETT V-NECK VEST	351171	14
EVERETT V-NECK VEST WMN	351172	14

F

FAIRFIELD FULL ZIP	MDK00061	12
FOREST PARK HALF ZIP	MCK00760	12

G

GATEWOOD TUNIC	LCW04132	20
GEORGETOWN STRIPE SHIRT	MCW01835	20
GRANITE FALLS	MCO00896	21
GRANITE FALLS WMN	LCO01196	21
GREEN LAKE FULL ZIP	MCK00805	36
GREEN LAKE HALF ZIP WMN	LCK02509	36

H

HADDEN REVERSIBLE HALF ZIP	MCK00736	13
HEADBAND	351202	47
HIGHLAND PARK POLO	MCK00755	08
HIGHLAND PARK POLO WMN	LCK02503	15
HINMAN CHECK	MDW00030	25
HOLDEN CHECK L/S	MDW00061	25
HOWSEN CREW	MDK00024	28

I

IN MOTION MOCK WMN	LCK02425	38
--------------------	----------	----

K

KINGSGATE EMBOSSED HALF ZIP	MCK00662	46
KINGSTON POLO	MCK00415	32
KINGSTON POLO WMN	LCK02351	32

L

LORD RAIN HAT	0401754036-99	49
LORD RAIN JACKET	351041	41
LORD RAIN JACKET WMN	351135	41
LORD RAIN PANT	351042	41
LORD RAIN PANT WMN	351136	41

M

MARKET POLO	MDK0003	24
MASON FULL ZIP	MCO00901	21
MEDINA TONAL STRIPE POLO	MCK00427	06
MEDINA TONAL STRIPE POLO WMN	LCK02358	07
MOGUL V-NECK WMN	LCK02464	40
MONTLAKE HALF ZIP	MCK00637	39
MORGAN JUNCTION RUGBY	MDK00045	26
MOUNT ADAMS FULL ZIP	MCO00908	44
MOXEE PLAID L/S	MDW00033	25

N

NORTHGATE POLO	MCK00753	34
NORTHGATE POLO WMN	LCK02501	34

O

OAKES SHADOW PLAID L/S	MDW00062	25
OVERSIZE HAT	351198	48
OVERTIME HALF ZIP	MCK00492	10

P

PINSTRIPE CAP	351197	47
---------------	--------	----

R

REGULAR SOCK	351078	49
--------------	--------	----

S

SEVEN HILLS SHAWL	MCS01822	28
SHAFTLESS SOCK	351111	49
SQUEEZE PLAY FULL ZIP WMN	LCK02423	16
STRIPE HAT	351199	48
SWEETEN POLO	MCK00331	35

T

TANGLE TOWN V-NECK	MDS00006	27
--------------------	----------	----

U

UMBRELLA	351073	49
----------	--------	----

V

VALE DENIM SHIRT L/S	MDW00067	25
VANCOUVER FULL ZIP WMN	LCK02532	16
VASHON STRIPED V-NECK	MDK00043	23
VISOR CAP	351198	47
VITAL HALF ZIP L/S	MCO00892	45
VITAL HALF ZIP S/S	MCO00890	45

W

WESTLAKE RELAXED STRAIGHT JEAN	MDB00002	31
WILLOWS POLO (ALDER POLO WMN)	MCK00497	33

Y

YESLER GARMENT DYE FULL ZIP	MDK00027	29
-----------------------------	----------	----

World-Class Embroidery Services

From expert embroidery to professional presentation, our industry-leading services ensure that your branded apparel will enhance your company's image.



Cutter & Buck Size Charts

How To Measure Your Body For Size

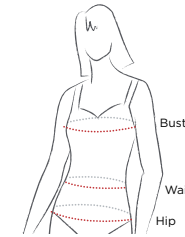
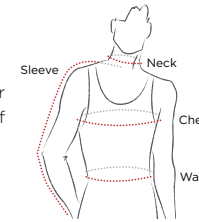
Neck: Measure around your neck at the point where a shirt collar band encircles the neck.

Chest: Place tape measure up under arms and measure the fullest part of the chest, keeping tape parallel to the floor.

Waist: Tape measure should be straight around waist where pant waistband normally sits.

Sleeve: With elbow bent, measure from the center of the back at the base of the neck, across the shoulder to the elbow and then down to the wrist.

Hip: Standing with heels together and with tape parallel to the floor, measure the fullest part.



Cutter & Buck Men's Regular Size Equivalency Chart

Size	Neck	Chest	Waist	Center Back Sleeve Length
X-Small	13.5-14	36-38	29-30	31.5-32
Small	14-14.5	38-40	31-32	32.5-33
Medium	15-15.5	40-42	33-34	33.5-34
Large	16-16.5	42-44	35-36	34.5-35
X-Large	16.5-17	44-46	37-38	35.5-36
XX-Large	17-17.5	46-48	39-40	36.5-37
XXX-Large	17.5-18	48-50	41-42	37.5-38

Cutter & Buck Men's Big Size (6'3" & under) Equivalency Chart

Size	Neck	Chest	Waist	Center Back Sleeve Length
1XB	18-18.5	46-48	42-44	35
2XB	19-19.5	50-52	46-48	35
3XB	20	54-56	50-52	36
4XB	21	58-60	54-56	36
5XB	22	62-64	58-60	37

Cutter & Buck Men's Tall Size (6'4" & taller) Equivalency Chart

Size	Neck	Chest	Waist	Center Back Sleeve Length
LT	17-17.5	42-44	38-40	37
XLT	18-18.5	46-48	42-44	38
2XT	19-19.5	50-52	46-48	39
3XT	20	54-56	50-52	40
4XT	21	58-60	54-56	41

Cutter & Buck Ladies' Size Equivalency Chart

Size	Bust	Waist	Hip
X-Small (2)	34	26	36.5
Small (4-6)	35-36	27-28	37.5-38.5
Medium (8-10)	37-38	29-30	39.5-40.5
Large (12-14)	39.5-41	31.5-33	42-43.5
X-Large (16-18)	42.5-44.5	34.5-36.5	45-47
XX-Large (20)	46	38	48.5
XXX-Large (22)	47.5	39.5	50

Cutter & Buck Women's Plus Size Equivalency Chart

Size	Bust	Waist	Hip
1X (14-16)	45-47	39-41	46-48
2X (18-20)	48-50	42-44	49-51
3X (22-24)	51-53	45-47	52-54
4X (26-28)	54-56	48-50	55-57
5X (30-32)	57-59	51-53	58-60

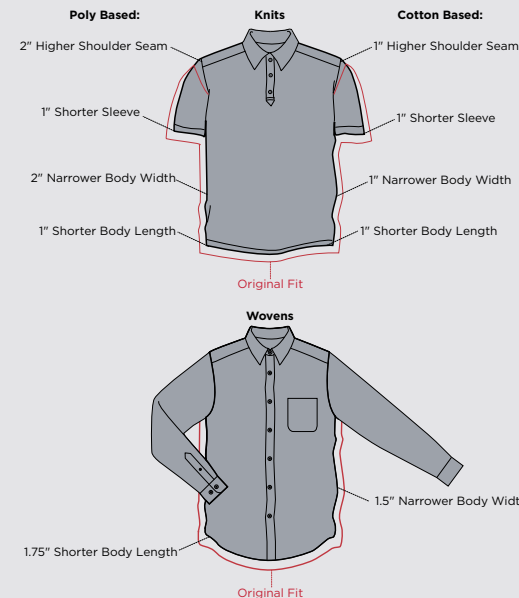
Cutter & Buck Corresponding Ladies' to Men's Sizes

Ladies'	XS	S	M	L	XL	XXL	XXXL	—
Men's	—	XS	S	M	L	XL	XXL	XXXL

These charts represent body measurements, not garment measurements.

Our Updated Fit

We've updated some of our styles for a more streamlined look. Our updated fit is cleaner, tidier, and more flattering – while still allowing movement and ease for performance on the course. Our original fit will still be offered in many of our classic pieces.





CUTTER & BUCK